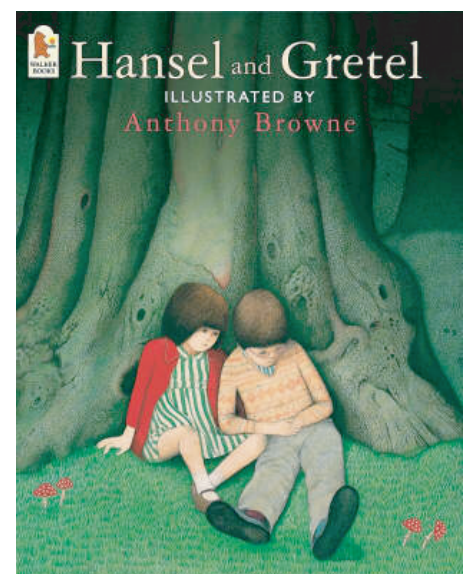
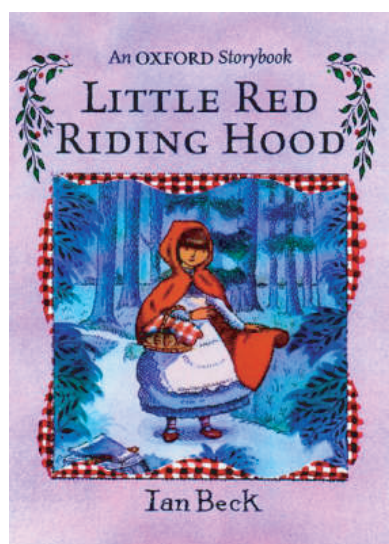
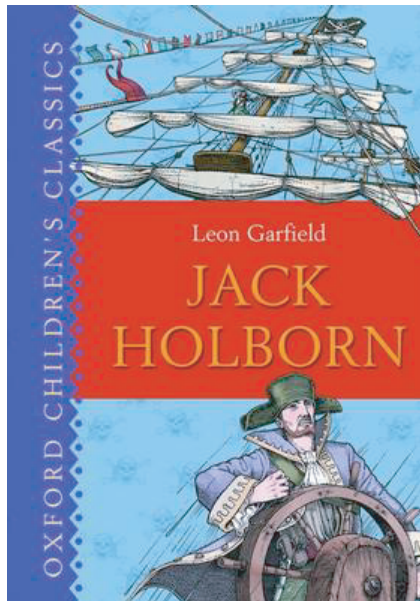
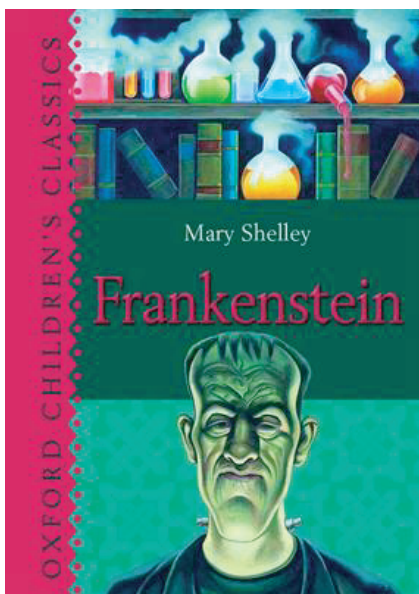
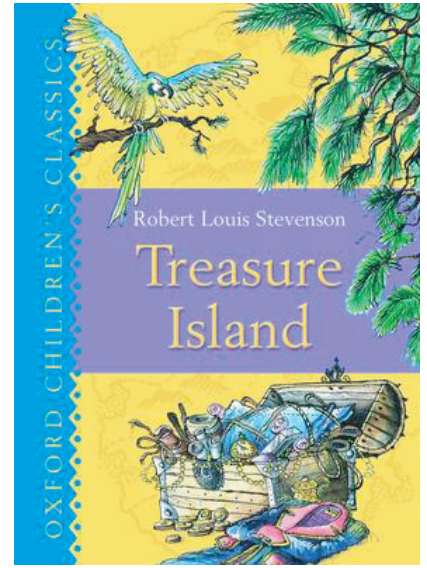
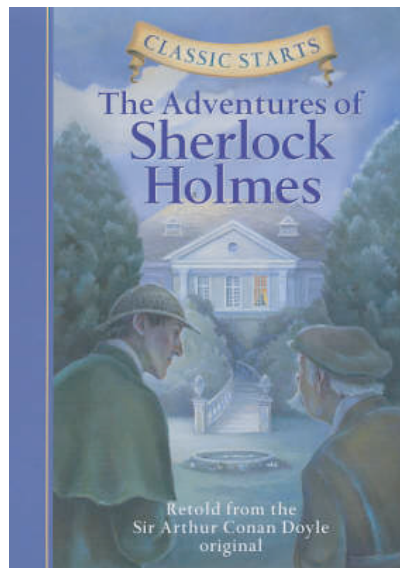
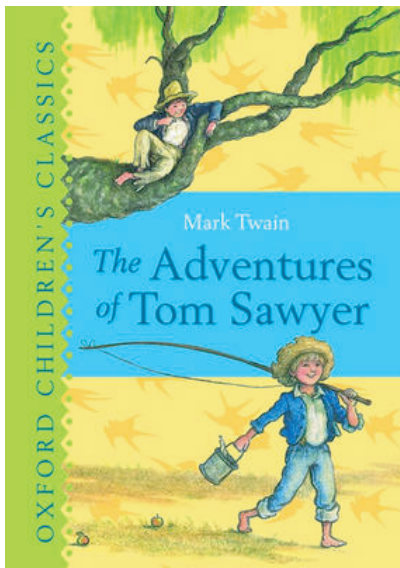
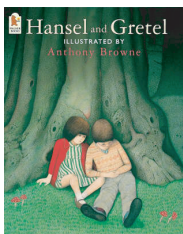


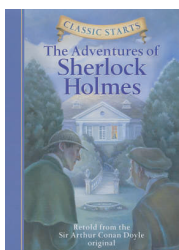
Look carefully at these book covers. Which one do you like?



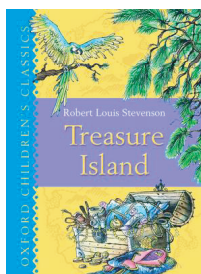
Use a Venn diagram to show similarities and difference between the book covers.



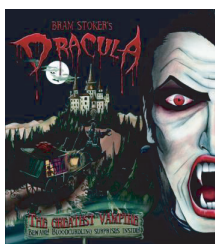
Hansel and Gretel



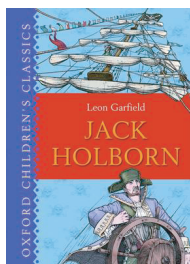
Sherlock Holmes



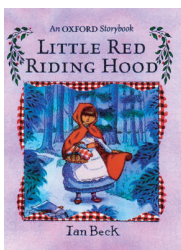
Treasure Island



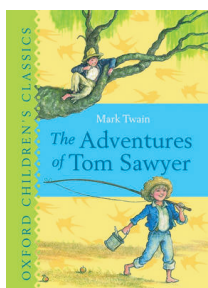
Dracula



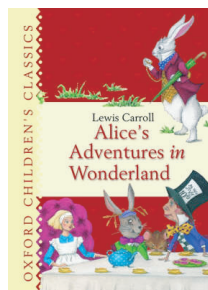
Jack Holborn



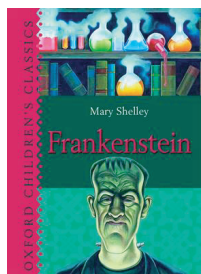
Little Red Riding Hood



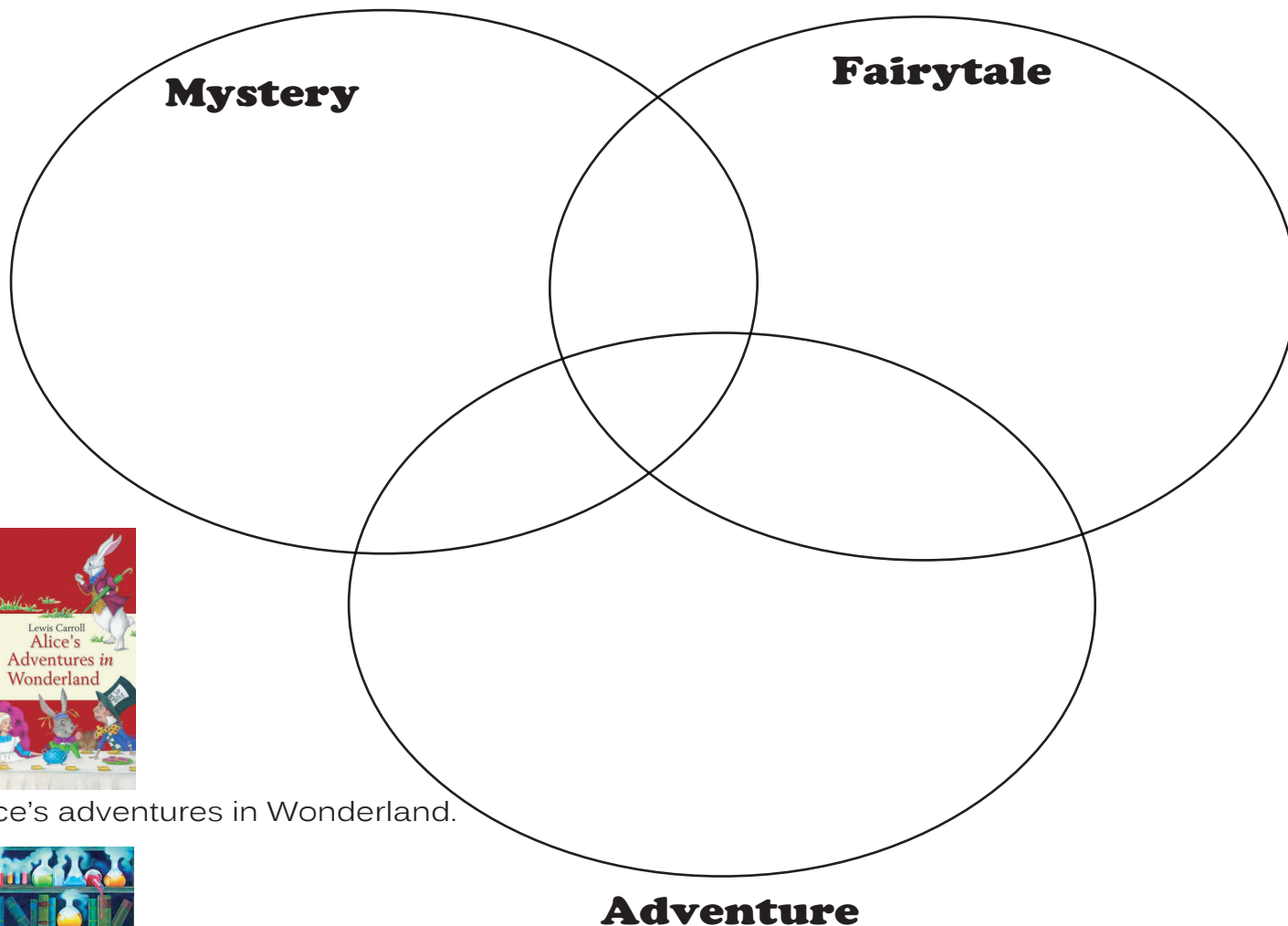
The adventures of Tom Sawyer



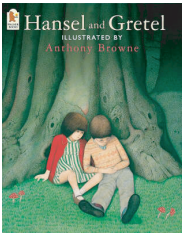
Alice's adventures in Wonderland.



Frankenstein



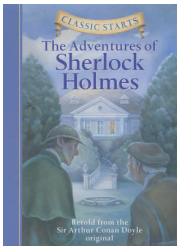
Find the right synopsis for each book and write the title.



Hansel and Gretel



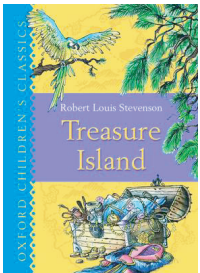
The story of a vampire looking for blood. He lives in a big castle in Transylvania. When the castle clock strikes midnight, bad things happen.



Sherlock Holmes



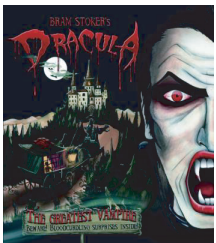
Victor, a scientist, knows the secret of life. He takes body parts from dead people and creates a "new man". He is a big and frightening monster.



Treasure Island



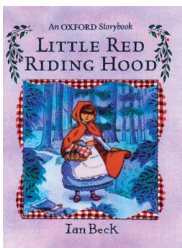
The story of a detective who lives in London. He solves mysteries.



Dracula



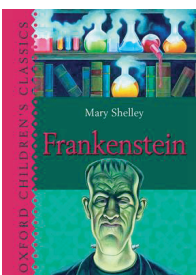
It is a tale of pirates and villains, maps and treasures. The story of Jim Hawkins, a young man who discovers a treasure map.



Little Red Riding Hood



The story of a young brother and sister who discover a candy house in the middle of the forest.



Frankenstein



It is the story of a little girl and big bad wolf. The girl's mother tells her to take some food to the granny who is sick. On the way she meets a wolf in a forest.

Picture dictation

1

In the	top bottom	left right	corner	draw a	sun. stick figure.
--------	---------------	---------------	--------	--------	-----------------------

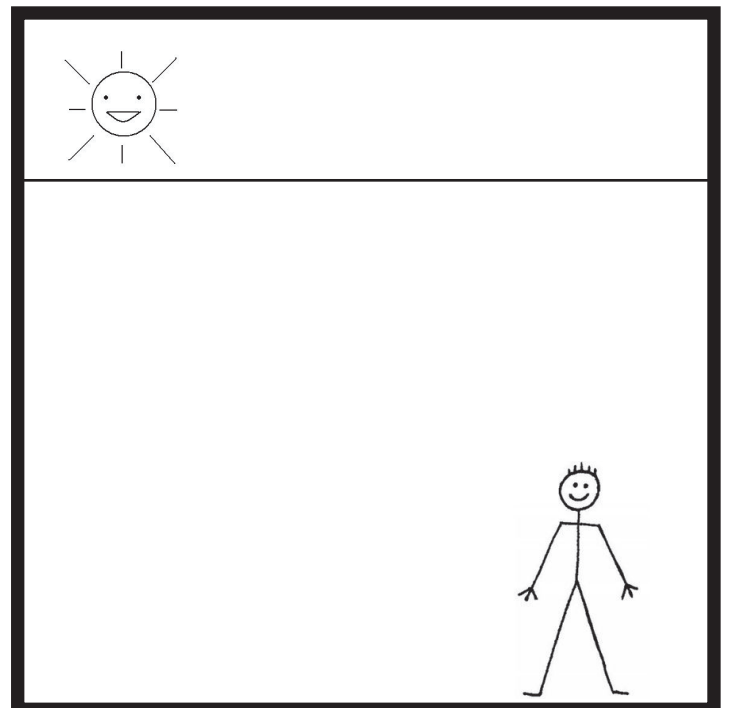
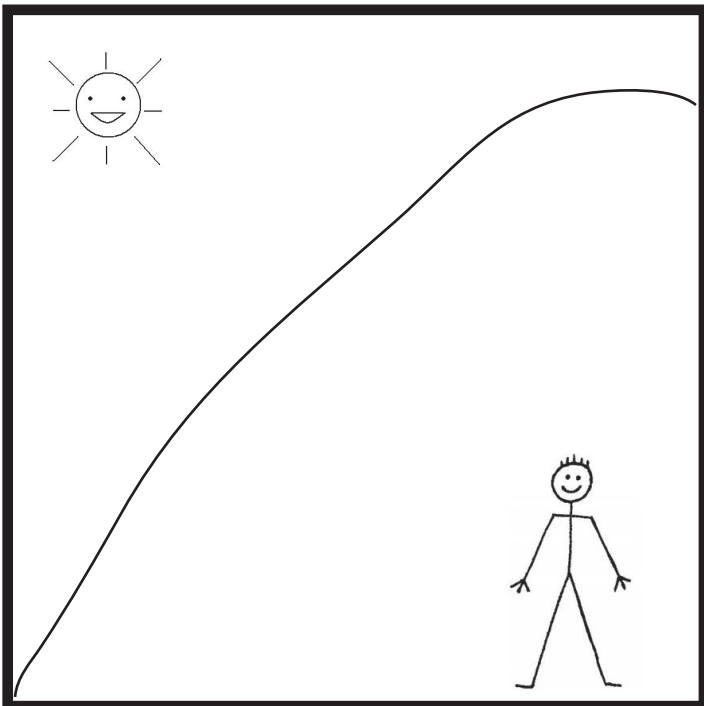
2

Draw a line	from the	left right	corner side	to the	left right	corner. side.
-------------	----------	---------------	----------------	--------	---------------	------------------

3

Draw a horizon	below the sun. above the stick figure.
----------------	---

STUDENT A



Picture dictation

1

In the	top bottom	left right	corner	draw a	sun. stick figure.
--------	---------------	---------------	--------	--------	-----------------------

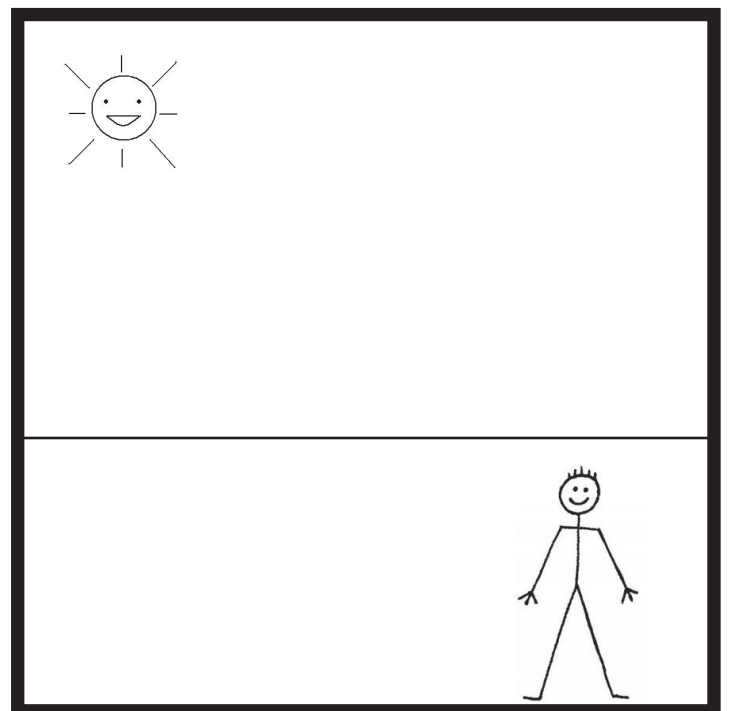
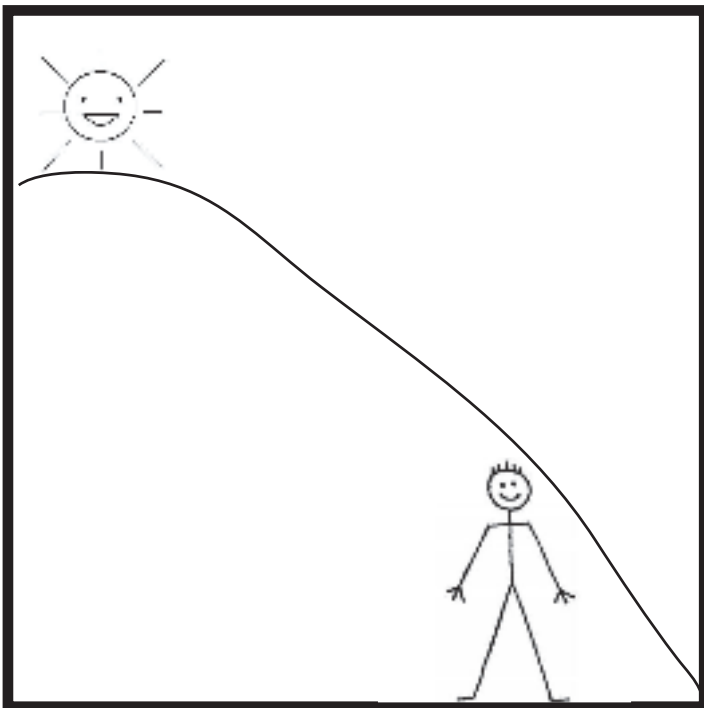
2

Draw a line	from the	left right	corner side	to the	left right	corner. side.
-------------	----------	---------------	----------------	--------	---------------	------------------

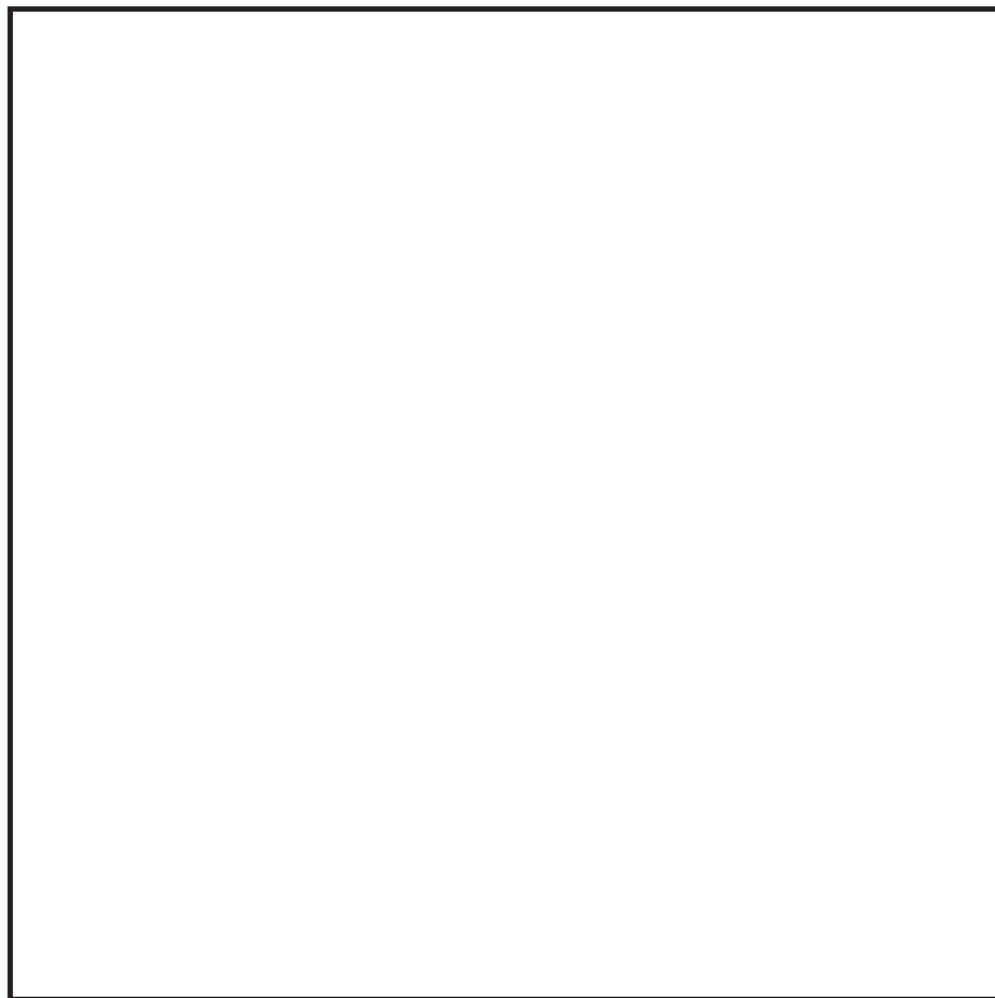
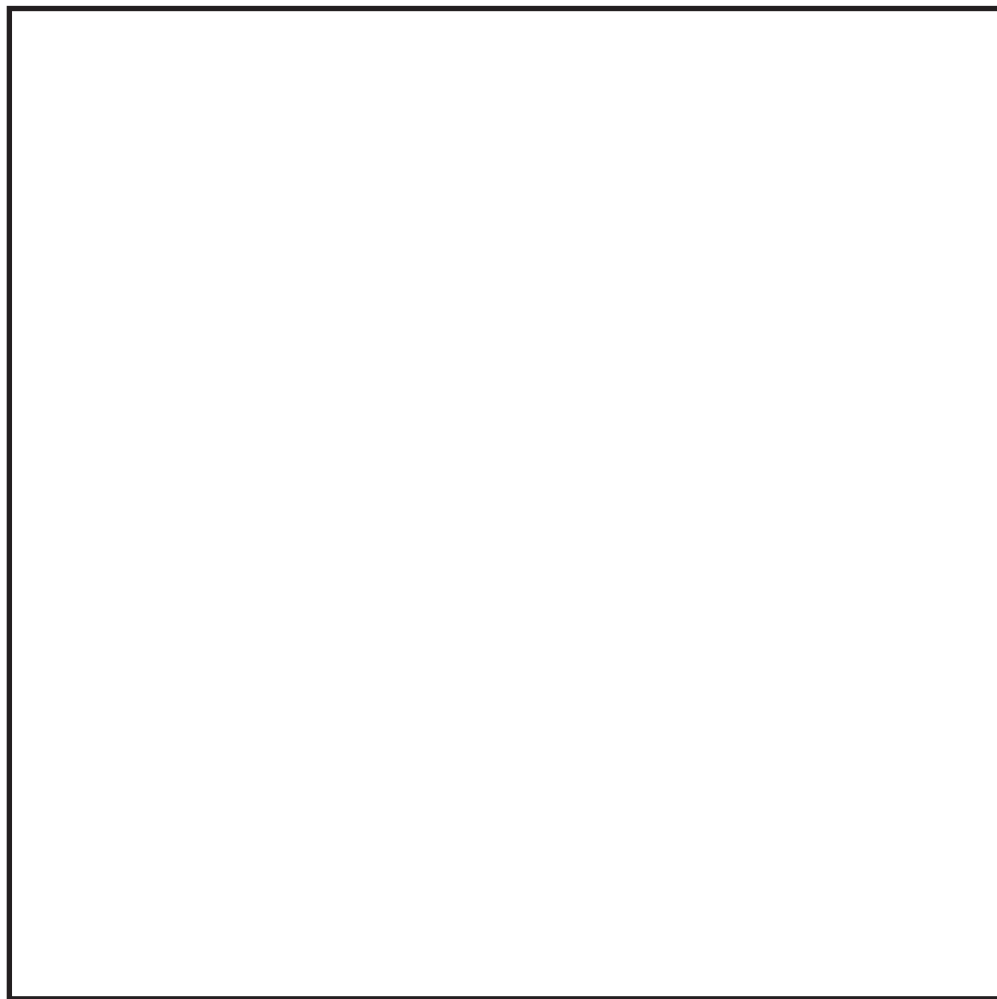
3

Draw a horizon	below the sun. above the stick figure.
----------------	---

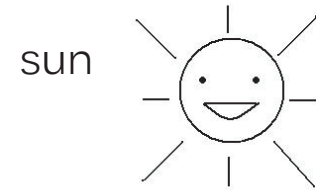
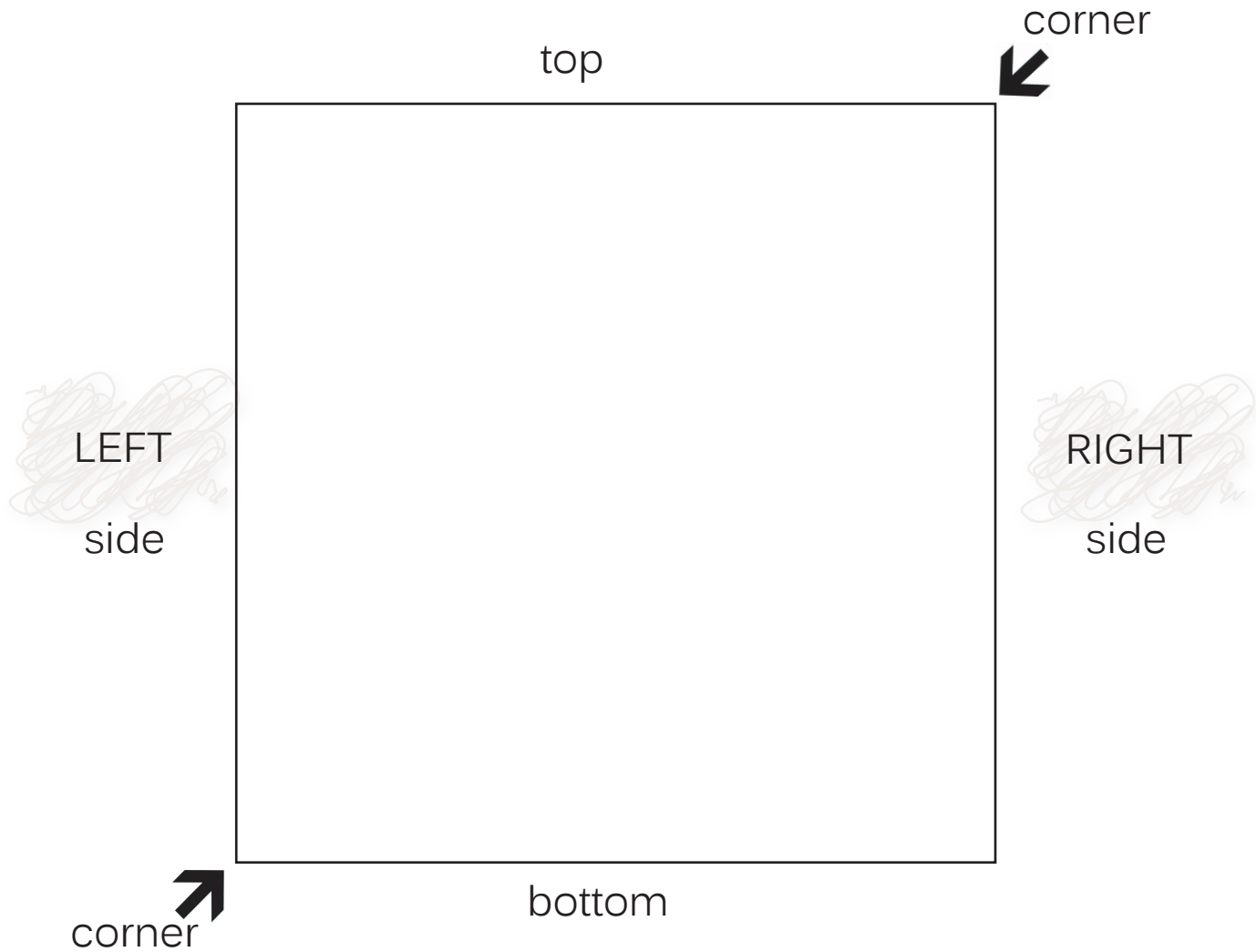
STUDENT B



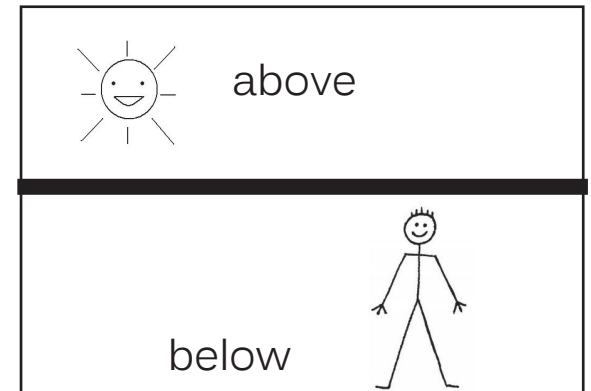
Picture dictation



My picture dictation.

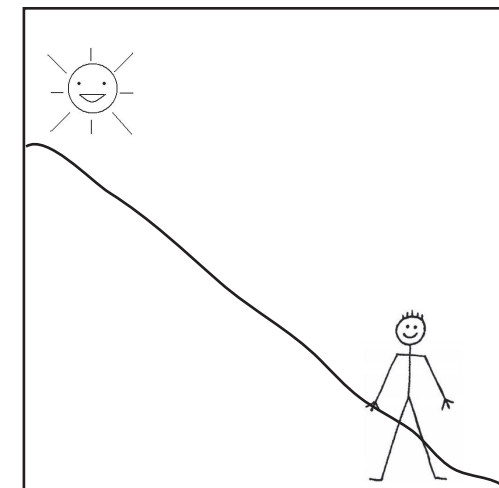
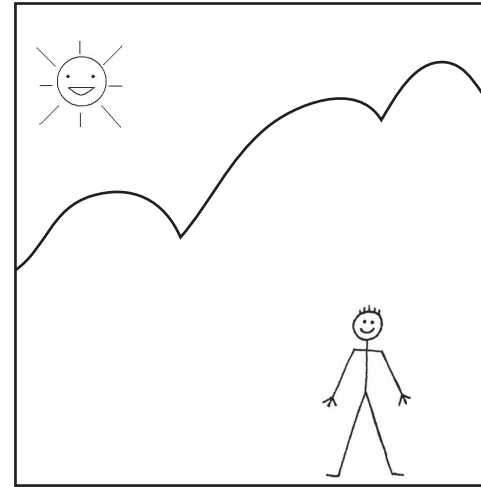
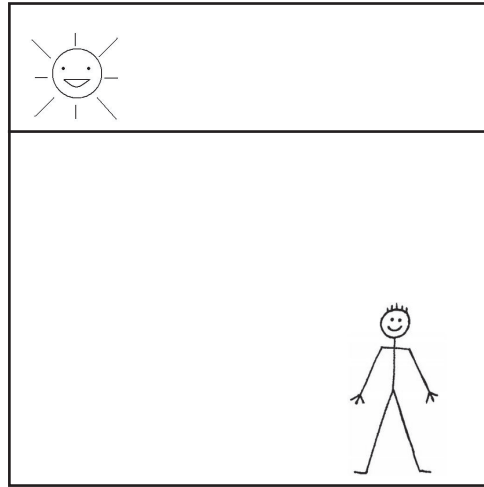
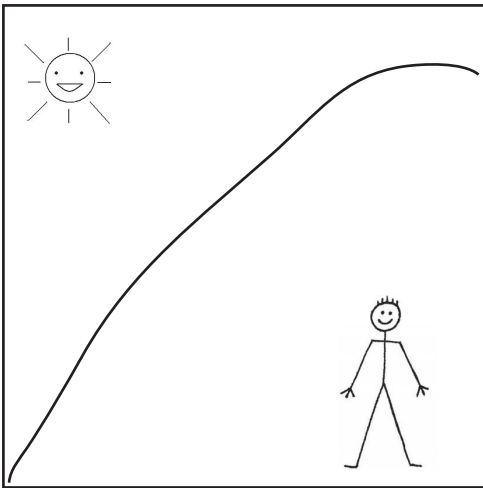


stick figure



HORIZON.

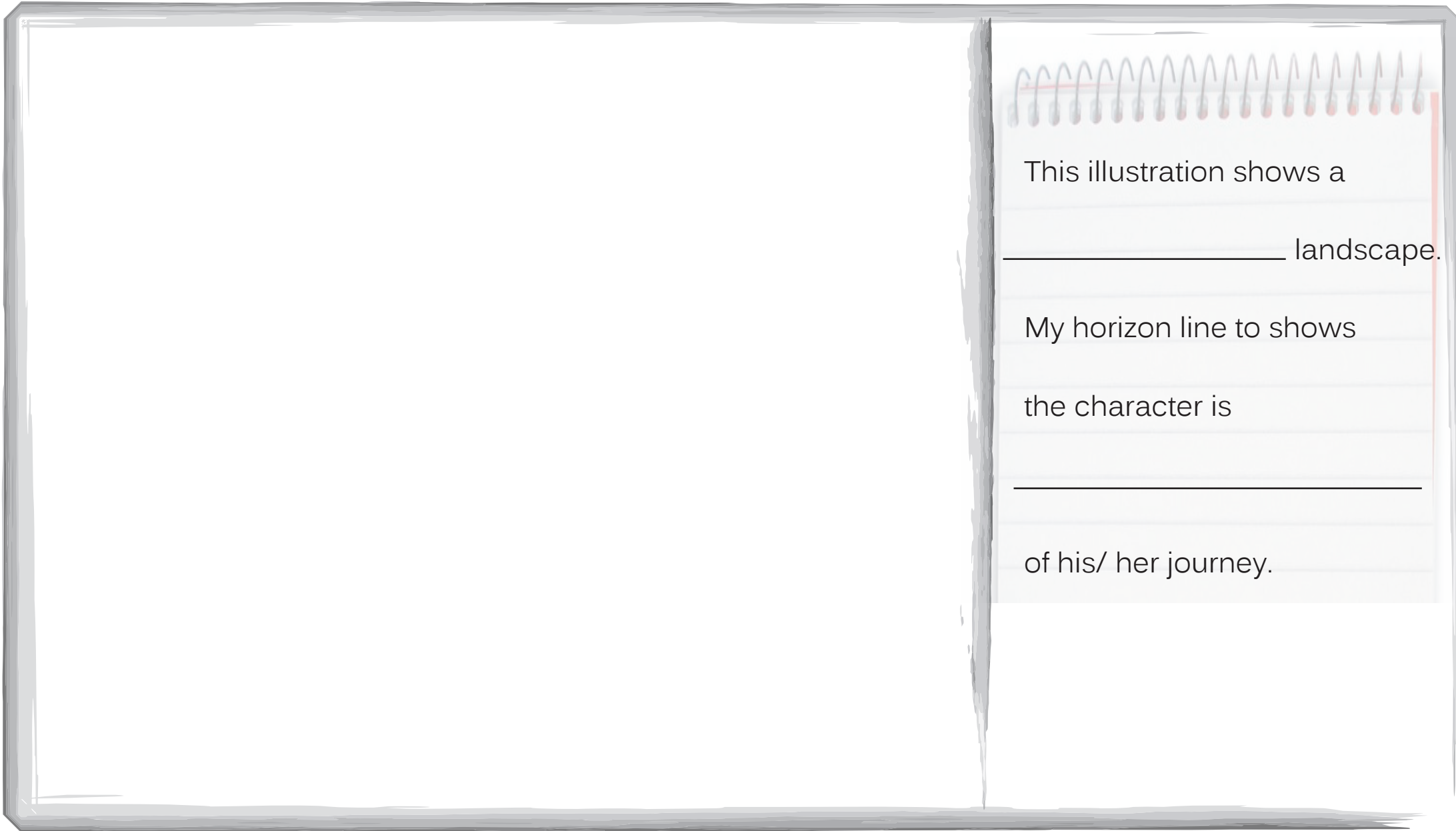
The horizon is an imaginary line, It shows where the sky joins the land.



Where in the desert is the stick figure?

I think	the stick figure	is	starting continuing finishing at the start of in the middle of at the end of	his her	journey
---------	------------------------	----	---	------------	---------

Draw a scene and complete the text.



This illustration shows a _____ landscape.

My horizon line to shows _____ the character is _____ of his/ her journey.