



Brainstorming



mystery



Adventure Island



fairytale



Who's got a
vampire?



Who's got a
monster?



Who's got a
ghost?



Who's got a
mermaid?



Who's got a
prince?



Who's got a
princess?



Who's got a
captain?



Who's got a
toad?



Who's got a
dragon?



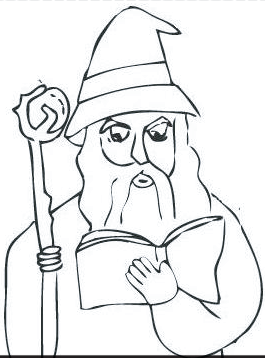
Who's got a
pirate's dog?



Who's got a
vampire girl?



Who's got a one
eyed monster?



Who's got a
wizard?



Who's got a
detective?



Who's got puss
in boots?



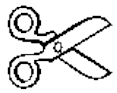
Who's got a
owl?



Who's got a
pirate?



Who's got a
Frankenstein?



Blank card template with a dashed border and a horizontal line across the middle.

Blank card template with a dashed border and a horizontal line across the middle.

Blank card template with a dashed border and a horizontal line across the middle.

Who's got a
 ?

Who's got a
 ?

Who's got a
 ?

Who's got a
 ?

Who's got a
 ?

Who's got a
 ?

Match the characters with the labels. Draw lines.



Vampire

Prince

Toad

Ghost

Pirate

Unicorn

Wizard

Detective

Monster

Captain

Fairy

Witch

Dragon



Color the labels following the code.

If you place this character ...



ORANGE



GREEN



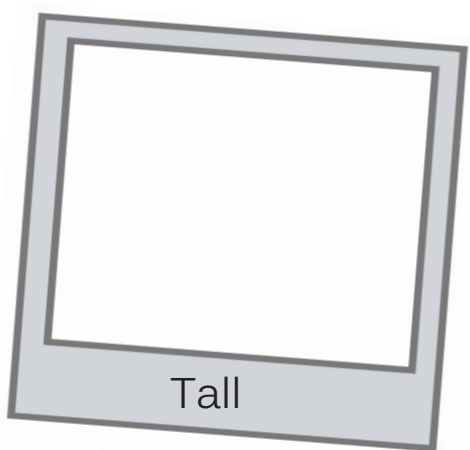
PINK

... in a **mystery** landscape.

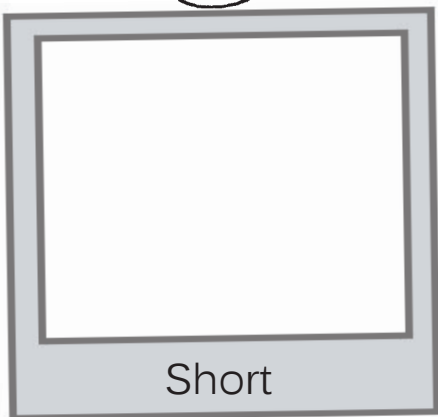
... in an **Adventure Island** landscape.

... in a **fairytale** landscape.

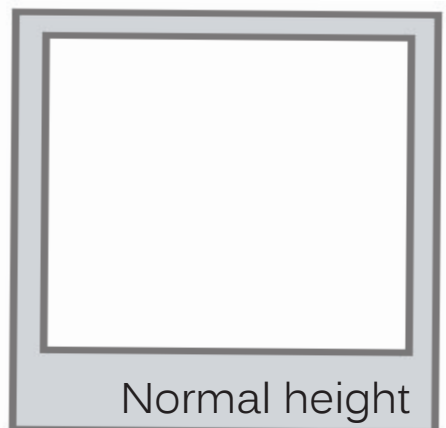
HELP!



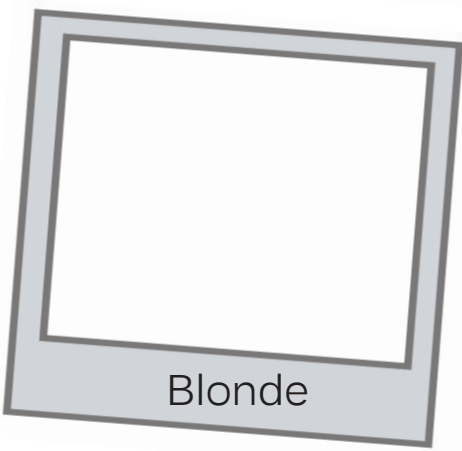
Tall



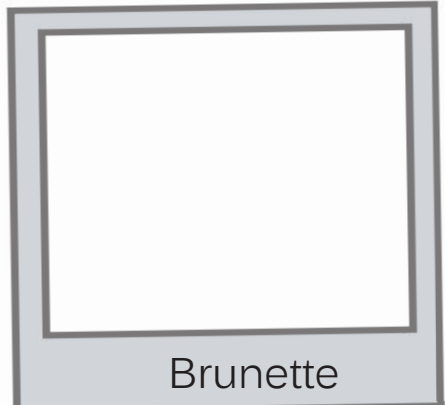
Short



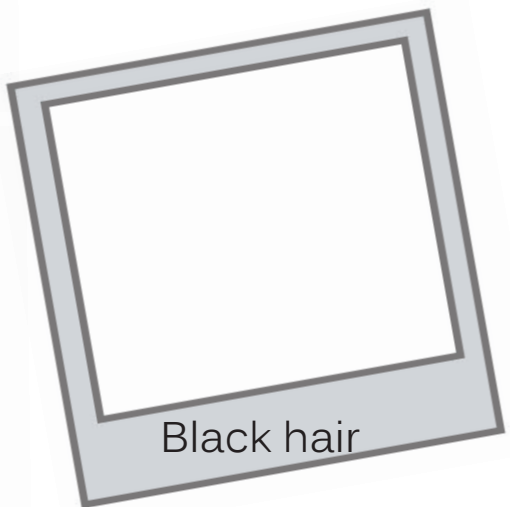
Normal height



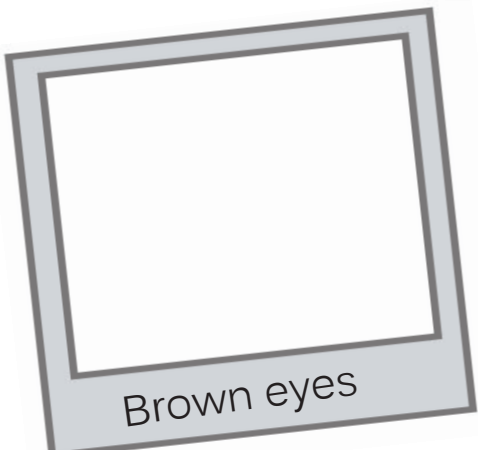
Blonde



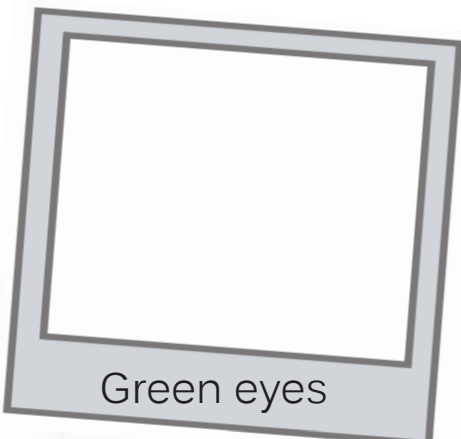
Brunette



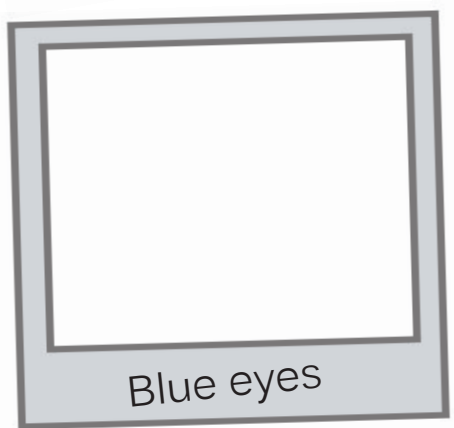
Black hair



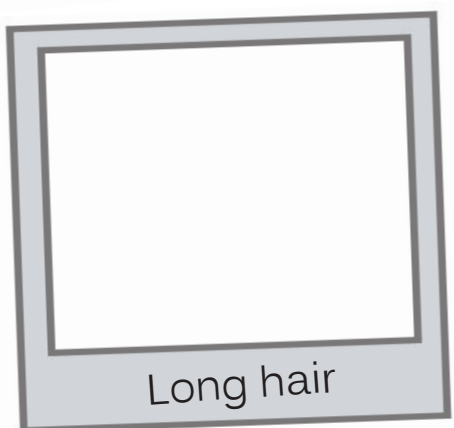
Brown eyes



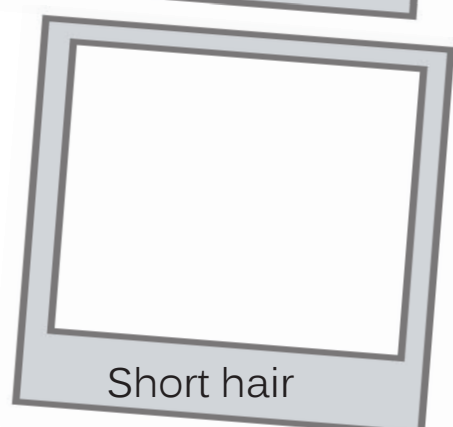
Green eyes



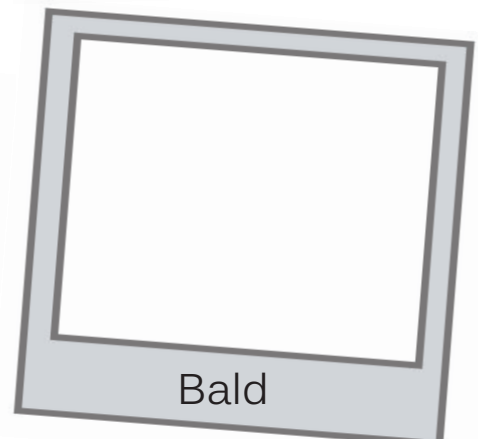
Blue eyes



Long hair



Short hair



Bald

Choose 6 to 8 adjectives from the list that are new and then translate.

Personality adjectives:

-charming

-friendly

-funny

-cheerful

-energetic

-brave

-polite

-intelligent

-kind

-happy

-scary

-lazy

-coward

-naughty

-weird

-bad

-cruel

-terrible

-grumpy

0. kind: amable

1. _____

2. _____

3. _____

4. _____

5. _____

6. _____

7. _____

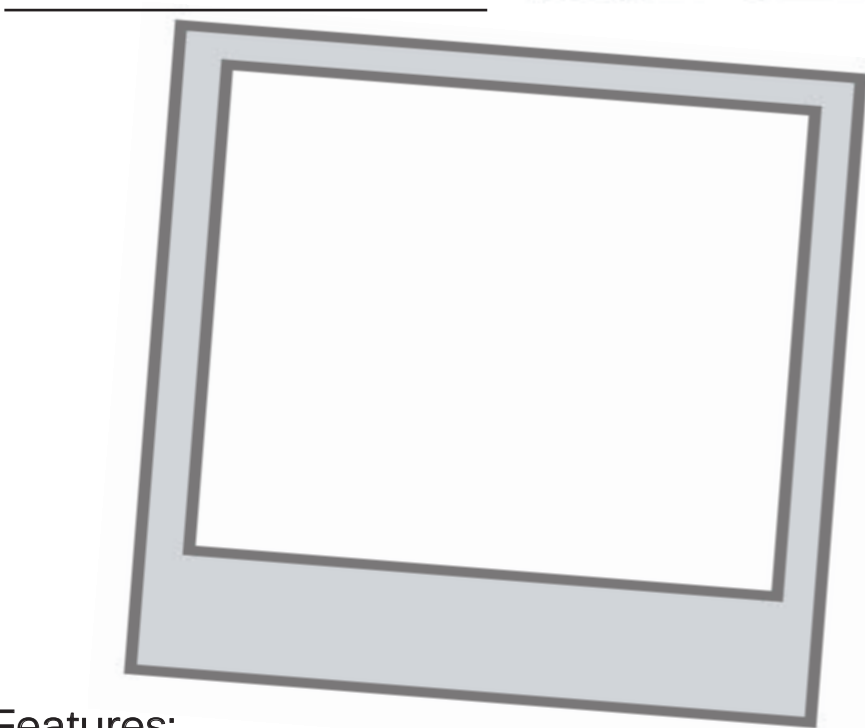
8. _____

Adjectives
HELP!

Name :

Date :

Character's name:

**Features:**Height: TALL SHORT NORMAL HEIGHTBody: SLIM FATHair: BLONDE BRUNETTE BLACK other: _____Type of hair: LONG SHORT STRAIGHT CURLY

Eyes: _____

Personality adjectives: CHARMING HAPPY FRIENDLY SCARY FUNNY LAZY CHEERFUL COWARD ENERGETIC NAUGHTY BRAVE WEIRD POLITE BAD INTELLIGENT CRUEL KIND TERRIBLE GRUMPY

Favourite phrase:

Literary landscape:

 MYSTERY FAIRYTALE ADVENTURE



Sketchbooks are frequently used by artists to practise their drawing skills.

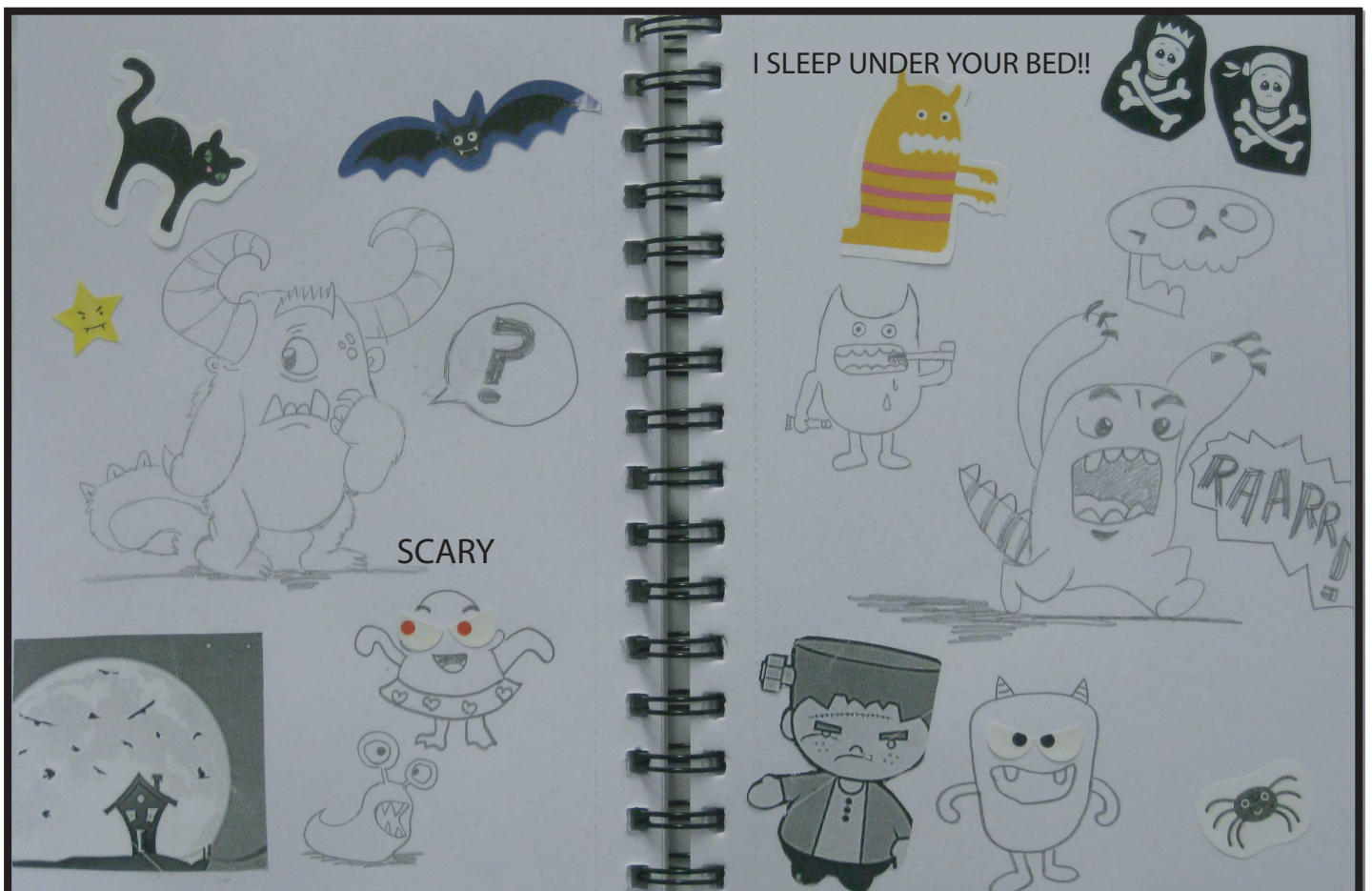
It's a notebook where they do sketches.

They also use the sketchbook for collecting ideas and writing notes.

Tips to start a sketchbook:

- Look at the world around you and record all the things you like.
- Always carry your sketchbook with you. Draw: people, buildings, animals, street furniture, plants... for inspiration.
- Cut out pictures from magazines and make a collage.
- Label the drawings.

This is an example of sketchbook to collect and record ideas to draw a monster.



2.10

Name :

Date :

Sketchbook

Draw again your character focusing on these adjectives:



bored



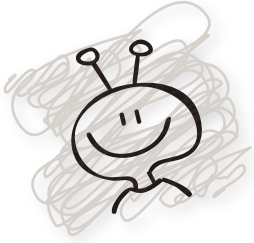
excited



happy or ecstatic









sad or miserable



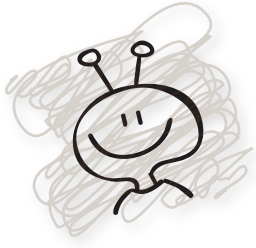
I'm, _____, I will fill in the friendly feedback for _____



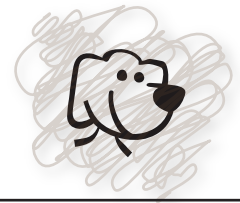
I can see...	I like ...
 _____	 _____
 _____	 _____
 _____	 _____







Try to improve (the)...






I'm, _____ I will fill in the friendly feedback for _____



I can see...	I like ...
 _____	 _____
 _____	 _____
 _____	 _____


WORD BANK

- a good sketch
- Cut outs from magazines
- Pictures
- Labels
- Lines




WORD BANK

- Character's face/hair/clothes
- Character's features
- Facial expressions
- Pictures
- Ideas
- Labels



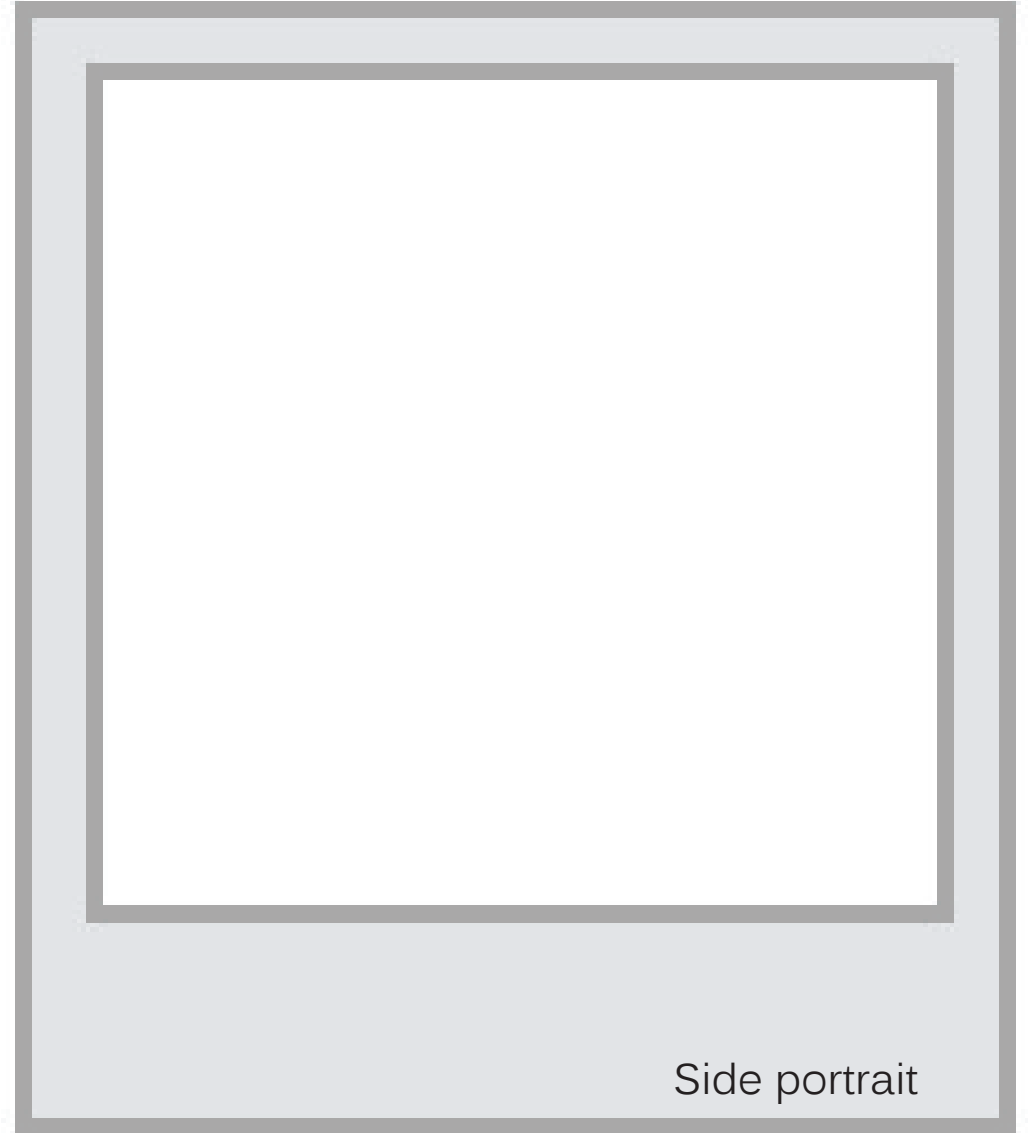
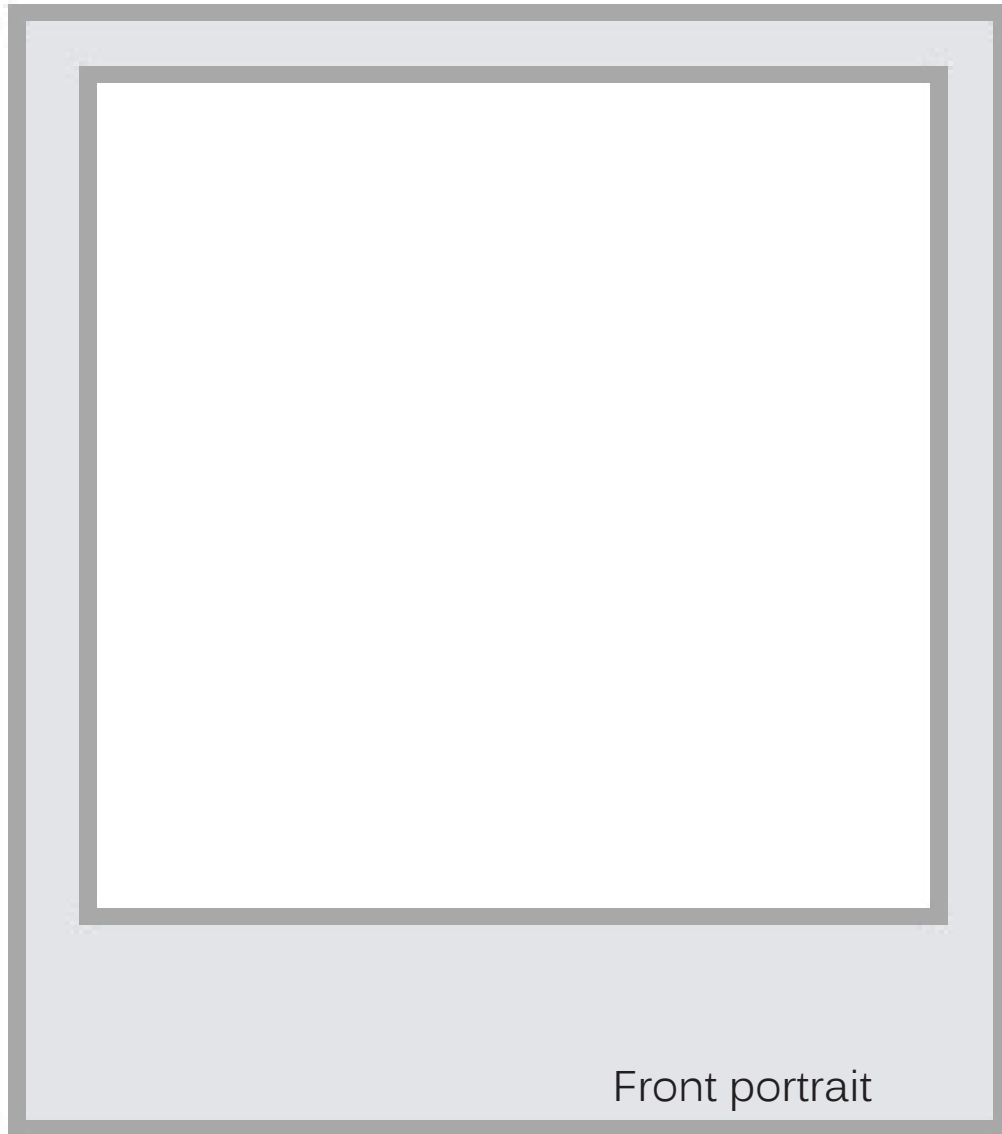
Try to improve (the)...

 _____

WORD BANK

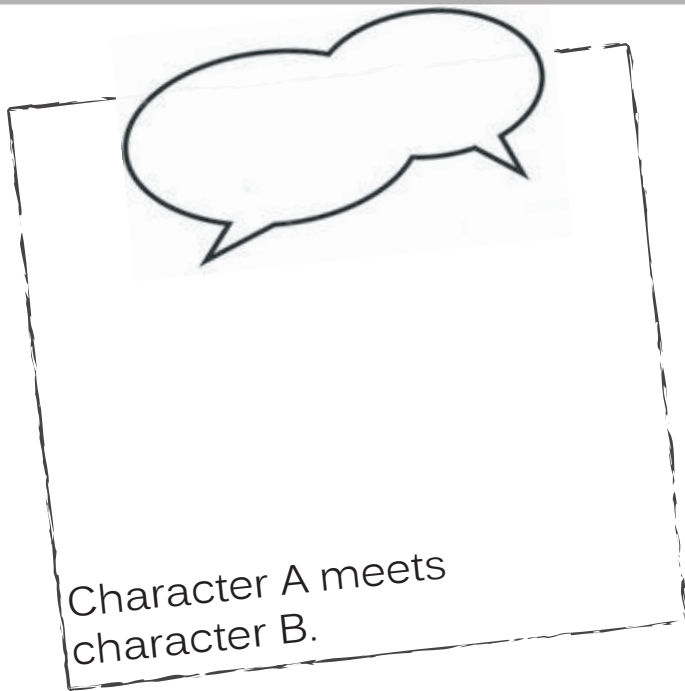
- Presentation
- Lines
- Shapes
- Features
- Facial expressions
- Character's face/hair/clothes

Front and side portraits.

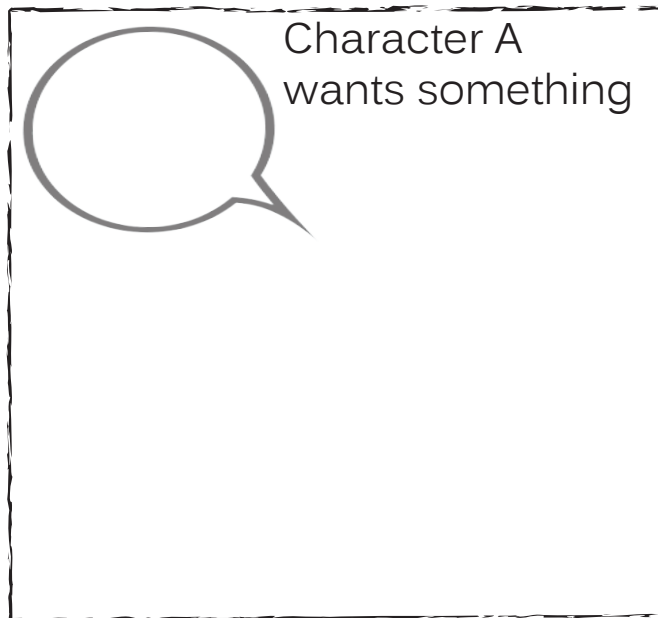


Name :

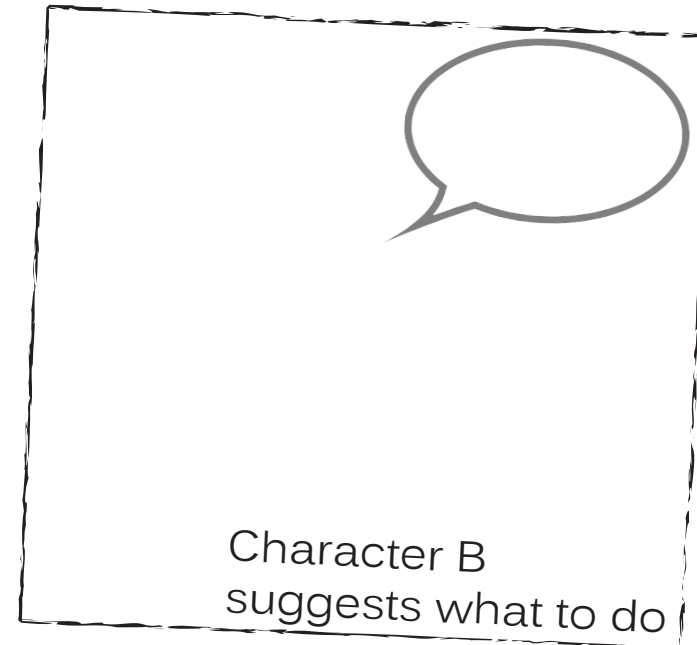
Date :



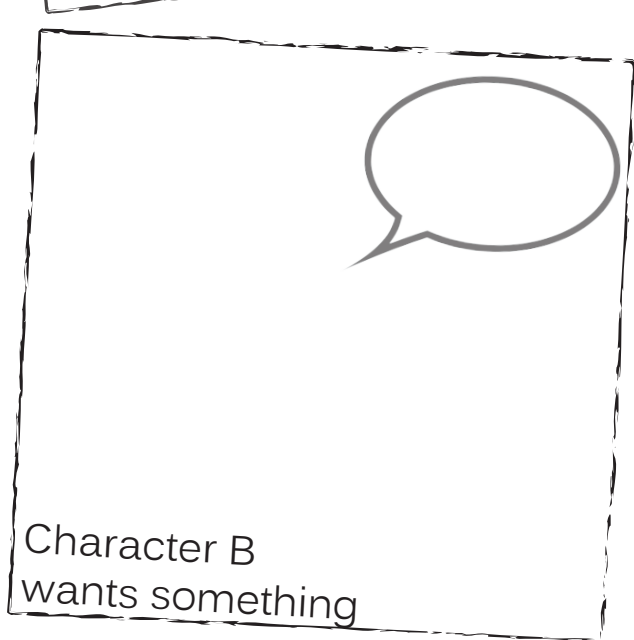
Character A meets character B.



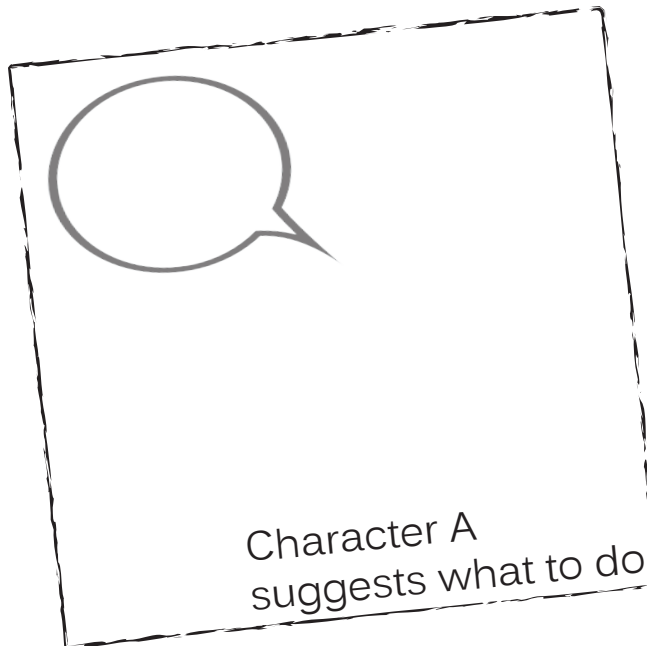
Character A wants something



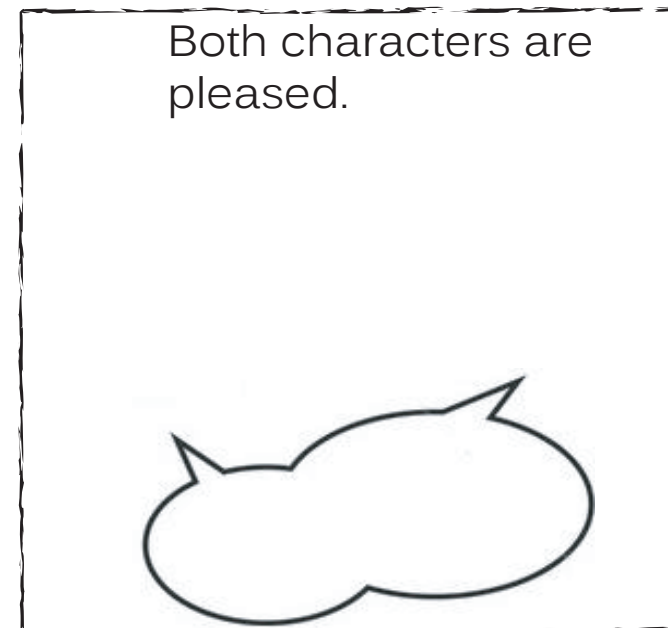
Character B suggests what to do



Character B wants something



Character A suggests what to do



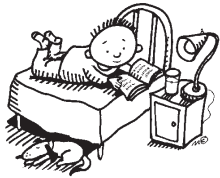
Both characters are pleased.

Name :

Date :

**Anthropomorphic
character**

Extension: Mix characters and actions.



2. one eyed pirate

3. Prince Charming

4. a mermaid with long hair

5. a fairy

6. an ugly witch

7. an old wizard

8. a ghost

9. a lovely princess

10. a three headed monster

11. a vampire girl

12. a fat detective



2. smiling with a missing tooth

3. singing a song

4. eating a big lollipop

5. making a potion

6. scaring little kids



8. dancing on a table

9. flying through the air

10. waving a pirate flag

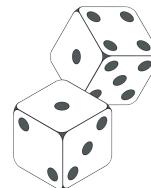
11. kissing a frog

12. wearing a big crown

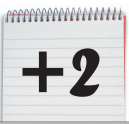
Characters



Actions



Which literary landscape is your character set in?



Name :

Date :

Characters

&

Actions